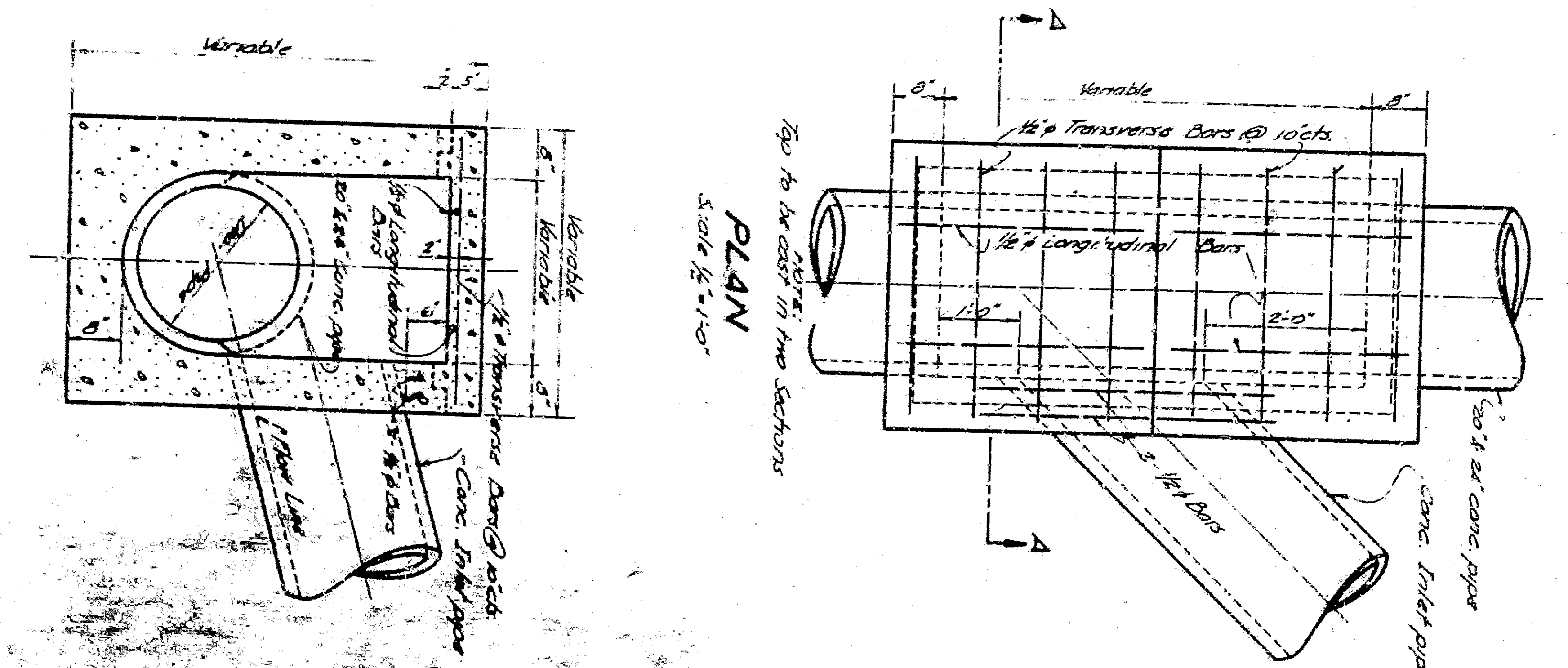


SKETCH SHOWING PIPE INCASED IN CONCRETE
 Note: All pipe of 18" or more I.D. to be incased as shown.

NOTE:
 Above sketch shows approx. location of Warm Creek and Meeks Pond Dug Ditch.



SECTION A-A
 INLET JUNCTION BOX
 Scale 1/2"=1'-0"

Date: Mar. 1948	Drawn by: J. S. ...
San Bernardino County	California
San Bernardino County	Water Commission
Designed for: ...	Checked by: ...
Water Commission	San Bernardino County
Date: ...	Scale: 1"=100'